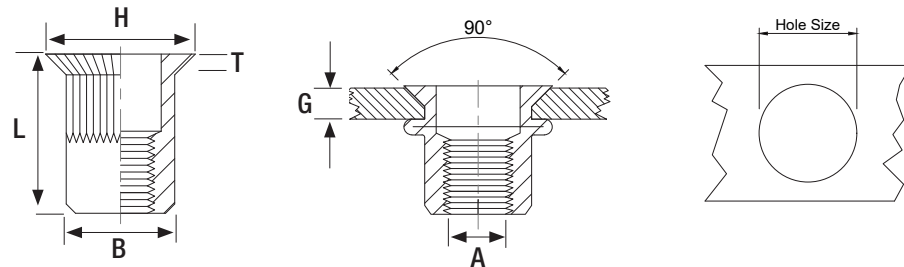


# COUNTERSUNK HEAD ROUND KNURLED BODY BLIND RIVET NUT

● Aluminium (AlMg 2.5)



Thread Size mm (A)	Article Number	Grip Range Min mm (G)	Grip Range Max mm (G)	Hole Size mm	Body Diameter mm (B)	Flange Diameter mm (H)	Flange Thickness mm (T)	Body Overall Length mm (L)	Max Tightening Torque Nm	Tensile Strength N	Box Quantity	Price £ Per 1000
<b>M3</b>	RNACH0325	1.5	2.5	5.0	4.9	7.5	1.5	8.5	0.7	2500	2000	£66.78
<b>M4</b>	RNACH0430	1.5	3.0	6.0	5.9	8.5		12.0	2.0	3600	1500	£63.37
	RNACH0450	3.0	5.0					13.0				1000
<b>M5</b>	RNACH0535	1.5	3.5	7.0	6.9	10.0		13.0	4.0	5500	1000	£74.34
	RNACH0550	3.0	5.0					15.0				1000
<b>M6</b>	RNACH0640	1.5	4.0	9.0	8.9	12.0		15.5	6.0	8300	500	£81.49
	RNACH0660	4.0	6.0					17.0				400
<b>M8</b>	RNACH0845	1.5	4.5	11.0	10.9	14.0		18.5	15.0	13000	300	£122.85
	RNACH0860	4.0	6.0					19.0				250
<b>M10</b>	RNACH1050	1.5	5.0	13.0	12.9	16.0		21.0	27.0	20000	150	£232.83
	RNACH1065	3.5	6.5				24.0	100				£260.57
<b>M12</b>	RNACH1250	2.0	5.0	16.0	15.9	19.0	22.0	45.0	28000	100	£770.54	
	RNACH1270	5.0	7.0				27.0				TBC	POA

Grip range and test data are guide figures only