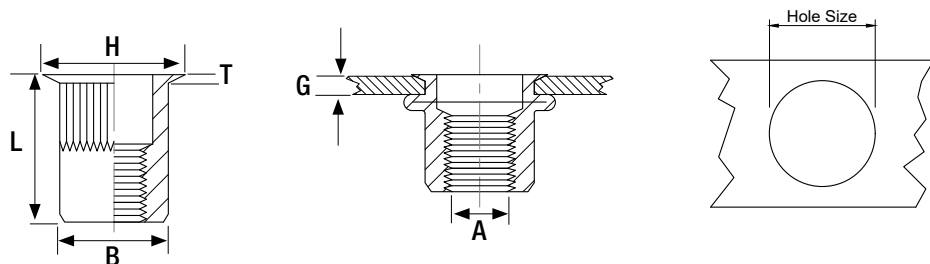


# REDUCED HEAD ROUND KNURLED BODY OPEN BLIND RIVET NUT

 A2 Stainless Steel (AISI304)



Thread Size mm (A)	Article Number	Grip Range Min mm (G)	Grip Range Max mm (G)	Hole Size mm	Body Diameter mm (B)	Flange Diameter mm (H)	Flange Thickness mm (T)	Body Overall Length mm (L)	Max Tightening Torque Nm	Tensile Strength N	Box Quantity	Price £ Per 1000
<b>M3</b>	RNSSRH0325	1.5	2.5	5.0	4.9	5.5	0.4	11.5	1.0	3900	2000	<b>£166.13</b>
<b>M4</b>	RNSSRH0420	0.5	2.0	6.0	5.9	7.0	0.5	10.5	3.0	6800	1000	<b>£166.13</b>
	RNSSRH0440	2.0	4.0					13.0			1000	<b>£196.05</b>
<b>M5</b>	RNSSRH0520	0.5	2.0	7.0	6.9	8.0	0.6	11.5	6.0	10000	1000	<b>£172.78</b>
	RNSSRH0540	2.0	4.0					13.0			1000	<b>£212.62</b>
<b>M6</b>	RNSSRH0630	0.5	2.5	9.0	8.9	10.0	0.6	14.0	10.0	15000	500	<b>£194.69</b>
	RNSSRH0650	2.5	5.0					16.0			500	<b>£223.95</b>
<b>M8</b>	RNSSRH0835	0.5	3.0	11.0	10.9	12.3	0.6	16.5	24.0	27000	250	<b>£299.03</b>
	RNSSRH0850	3.0	5.0					19.5			250	<b>£313.46</b>
<b>M10</b>	RNSSRH1035	1.0	3.5	13.0	12.9	14.5	0.9	17.7	32.0	28500	250	<b>£557.06</b>
	RNSSRH1060	3.5	6.0					23.0			250	<b>£508.96</b>
<b>M12</b>	RNSSRH1235	1.0	4.0	16.0	15.9	16.5	0.9	24.2	44.0	48000	100	<b>£918.20</b>
	RNSSRH1260	4.0	6.5					27.0			100	<b>£807.64</b>